



# HARDSCAPING PORTFOLIO

*CHANGE THE WAY YOU HARDSCAPE!*





NATURALLY  
MORE  
BEAUTIFUL



# NATURAL PAVING

North America's leading independent supplier of natural stone hardscaping materials.

Natural Paving USA is proud to introduce you to our beautiful range of premium products, helping to bring your outdoor living space to life.

All of our high-quality natural stone pavers come in remarkable colors and finishes, making you the complete envy of your neighborhood.

Our unparalleled range of premium products, knowledgeable support and exceptional customer service are what makes us the ultimate choice.

**Tel:** (888) 240-8704

**Fax:** (214) 382-2629

**Email:** [sales@naturalpavingusa.com](mailto:sales@naturalpavingusa.com)

Natural Paving USA Inc.

124 Eason Drive, Pooler, GA 31322

[www.naturalpavingusa.com](http://www.naturalpavingusa.com)





The **Natural Paving** collection provides homeowners with:

- ✓ A more prestigious, durable and stylish hardscape option to colored concrete.
- ✓ A complete outdoor living solution, with complementary flagstones, pavers, coping and step treads, enabling a continuity of design from the front driveway through to the outdoor living area.
- ✓ An option to create a truly custom outdoor living space.



# CONTENTS

- 06 Classicstone™**  
Indian sandstone and limestone flagstones
- 28 Premiaestone™**  
Smooth sandstone flagstones
- 36 Pool Coping and Pier Caps**  
Chiseled and bullnose sandstone coping and pier caps
- 40 De Terra™**  
Sandstone and limestone pavers
- 54 Step Treads**  
Sandstone natural finish step treads
- 56 Jumbo Pavers and Counter Tops**  
Natural finish & calibrated sandstone
- 58 Fire Pits**  
Pre made, natural finish sandstone kits
- 60 Pavetuf**  
Jointing Compound  
Sealers  
Cleaners
- 66 ASTM Testing**
- 68 Custom Solutions**
- 69 How to Buy**
- 70 Installation**
- 72 Laying Patterns**
- 74 Benefits of Natural Stone**
- 76 Stone: Our End to End Solution**
- 79 Product Information and Guidance**





# CLASSICSTONE™









CLASSICSTONE™

Promenade™



## Choosing the right look

We have a huge selection of natural stone products, each with a variety of finishes, sizes and colors to choose from. To help you select the right one for you, please see the tables below explaining our product descriptions.

### Key terms glossary:

**Tumbled/ Rumbled** Literally tumbled to give a weathered, aged and antique finish.

**Chamfered** Where a stone edge has been beveled.

**Calibrated** Stone that has been machine cut to a nominal thickness.  
  
Calibrated stone is useful where weight and/or limited depth for laying the product is an issue. It is easier to install than non-calibrated stone.

**Project Packs** Contains a fixed mix of nominal sizes that allow flagstones to be laid randomly. Please see page 72 for project pack laying patterns.



**Single Sizes** Contains a fixed number of stones that are all of the same nominal dimensions. Useful for contemporary linear designs.



**Circle Kits** Pieces of flagstones that have been cut and shaped to make circular patterns, ideal for creating focal points. Please see page 24 for circle kits.



### Color Variation:

This key indicates the relevant extent of color variation and shading that is present on each product.



Each flagstone within this range is distinct with unique and varying color palettes, differing riven surfaces, natural veining and occasional fossil prints.

Classicstone™ products are available in a combination of project packs, single sizes and circle kits.

Please note that Graphite™, Charcoal™ and Steel Blue™ are not available in circle kits.

Classicstone™ products have been calibrated and sized in squares and rectangles to ease and reduce the cost of on-site installation.

Please note that all product sizes, weights and coverages stated throughout this brochure are nominal.

### The Classicstone™ collection includes:



Promenade™\*  
◆◆◆◆



Lakeland™  
◆◆◆◆



Golden Fossil™  
◆◆◆◆



Harvest™  
◆◆◆◆



Graphite™  
◆◆◆◆



Charcoal™\*\*  
◆◆◆◆



Steel Blue™\*\*  
◆◆◆◆

We strongly recommend that sufficient product for each project is purchased together and from the same production batch, as there may be slight color variations between different batches. It's **IMPORTANT**, before unpacking, you check that the shade references are compatible if you have received more than one pallet.

\*Please note that although Promenade™ is predominantly a mix of gray shades, it can also display buff and brown tones.

\*\*Please note all colors shown are sandstone, except for Charcoal™ and Steel Blue™ which are both limestone, and can lighten in the sunlight over a period of time.

**Important - Do not use acid on Natural Stone**



## PROMENADE™



### Calibrated Project Pack 4 Paver Sizes

Each paver is: 1" thick (nominal)

Each pack:

Covers: 205ft<sup>2</sup>

Weighs: 2250lbs

Contains: 60 no. pieces

☐ 11¾" x 11¾" - 12 flagstones

☐ 24" x 12" - 16 flagstones

☐ 24" x 24" - 16 flagstones

☐ 36" x 24" - 16 flagstones

### Calibrated Single Size 24" x 24"

Each paver is: 1" thick (nominal)

Each pack:

Covers: 176ft<sup>2</sup>

Weighs: 2000lbs

Contains: 44 no. pieces

☐ 24" x 24" - 44 flagstones









With Lakeland™ wall coping and pier caps, see page 36.

# LAKELAND™



## Calibrated Project Pack 4 Paver Sizes

Each paver is: 1" thick (nominal)

Each pack:

Covers: 205ft<sup>2</sup>


Weights: 2250lbs

Contains: 60 no. pieces

 11 3/4" x 11 3/4" - 12 flagstones

 24" x 12" - 16 flagstones

 24" x 24" - 16 flagstones

 36" x 24" - 16 flagstones

## Calibrated Single Size 24" x 24"

Each paver is: 1" thick (nominal)

Each pack:

Covers: 176ft<sup>2</sup>

Weights: 2000lbs

Contains: 44 no. pieces

 24" x 24" - 44 flagstones







## GOLDEN FOSSIL™



### Calibrated Project Pack 4 Paver Sizes

Each paver is: 1" thick (nominal)

**Each pack:**

Covers: 205ft<sup>2</sup>

Weights: 2250lbs

Contains: 60 no. pieces



11 3/4" x 11 3/4" - 12 flagstones



24" x 12" - 16 flagstones



24" x 24" - 16 flagstones



36" x 24" - 16 flagstones

### Calibrated Single Size 24" x 24"

Each paver is: 1" thick (nominal)

**Each pack:**

Covers: 176ft<sup>2</sup>

Weights: 2000lbs

Contains: 44 no. pieces



24" x 24" - 44 flagstones









## HARVEST™



Harvest™ can include beautiful rose and pink tones.

### Calibrated Project Pack 4 Paver Sizes

Each paver is: 1" thick (nominal)

**Each pack:**

Covers: 205ft<sup>2</sup>

Weighs: 2250lbs

Contains: 60 no. pieces

☐ 11¾" x 11¾" - 12 flagstones

☐ 24" x 12" - 16 flagstones

☐ 24" x 24" - 16 flagstones

☐ 36" x 24" - 16 flagstones

### Calibrated Single Size 24" x 24"

Each paver is: 1" thick (nominal)

**Each pack:**

Covers: 176ft<sup>2</sup>

Weighs: 2000lbs

Contains: 44 no. pieces

☐ 24" x 24" - 44 flagstones







## GRAPHITE™



### Calibrated Project Pack 4 Paver Sizes

Each paver is: 1" thick (nominal)

**Each pack:**

Covers: 205ft<sup>2</sup>

Weighs: 2250lbs

Contains: 60 no. pieces



11 3/4" x 11 3/4" - 12 flagstones



24" x 12" - 16 flagstones



24" x 24" - 16 flagstones



36" x 24" - 16 flagstones

### Calibrated Single Size 24" x 24"

Each paver is: 1" thick (nominal)

**Each pack:**

Covers: 176ft<sup>2</sup>

Weighs: 2000lbs

Contains: 44 no. pieces



24" x 24" - 44 flagstones







## CHARCOAL™



### Calibrated Project Pack 4 Paver Sizes

Each paver is: 1" thick (nominal)

**Each pack:**

**Covers:** 205ft<sup>2</sup>

**Weighs:** 2250lbs

**Contains:** 60 no. pieces

☐ 11¾" x 11¾" - 12 flagstones

☐ 24" x 12" - 16 flagstones

☐ 24" x 24" - 16 flagstones

☐ 36" x 24" - 16 flagstones

### Calibrated Single Size 24" x 24"

Each paver is: 1" thick (nominal)

**Each pack:**

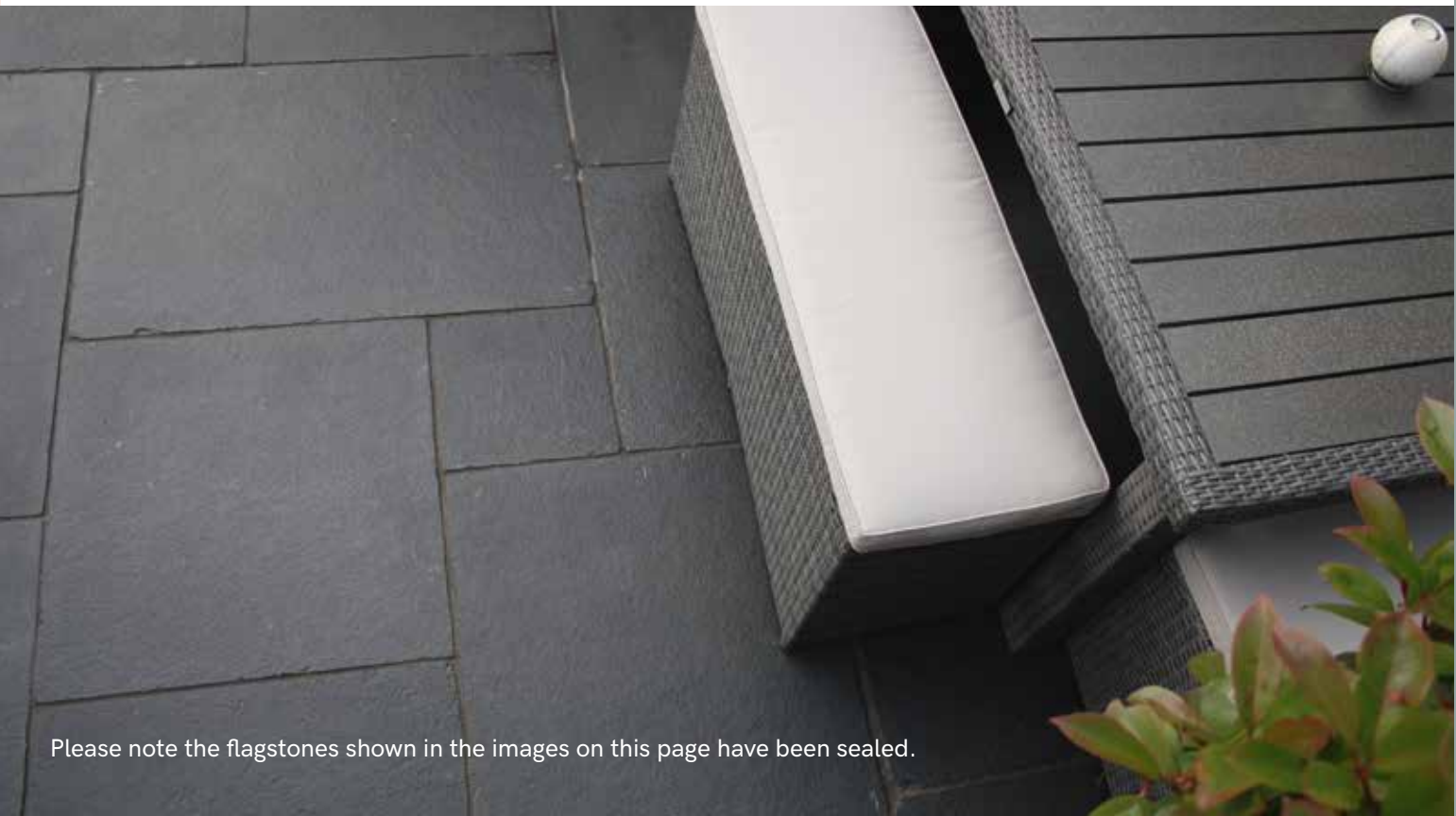
**Covers:** 176ft<sup>2</sup>

**Weighs:** 2000lbs

**Contains:** 44 no. pieces

☐ 24" x 24" - 44 flagstones





Please note the flagstones shown in the images on this page have been sealed.



## STEEL BLUE™



### Calibrated Project Pack 4 Paver Sizes

Each paver is: 1" thick (nominal)

#### Each pack:

Covers: 205ft<sup>2</sup>


Weighs: 2250lbs

Contains: 60 no. pieces

 11 3/4" x 11 3/4" - 12 flagstones

 24" x 12" - 16 flagstones

 24" x 24" - 16 flagstones

 36" x 24" - 16 flagstones









# CIRCLES

Harvest™\*\*



The Classicstone™ range also includes natural stone circle kits available in:



Promenade™\*



Lakeland™



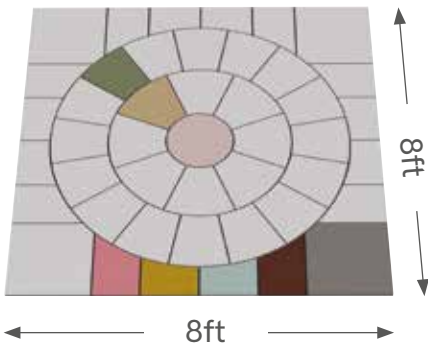
Golden Fossil™



Harvest™



The circles include 2 rings and a squaring off kit:



Each 2 ring circle with squaring off kit:  
- Covers 64ft<sup>2</sup>  
- Contains 45 pieces  
- Weighs 840 lbs



Promenade™\*\*



Harvest™\*\*



Golden Fossil™\*\*

\*Please note that although Promenade is predominantly a mix of gray shades, it can also display buff and brown tones.

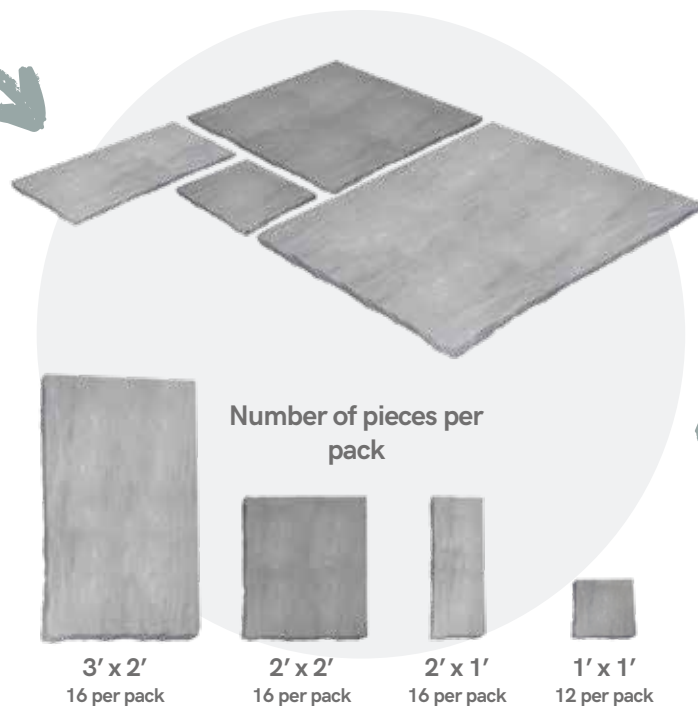
\*\* Please note these are 3 ring circles without a squaring off kit - available on special order.

# UNDERSTANDING CLASSICSTONE™ PROJECT PACKS

Paving in a pack...

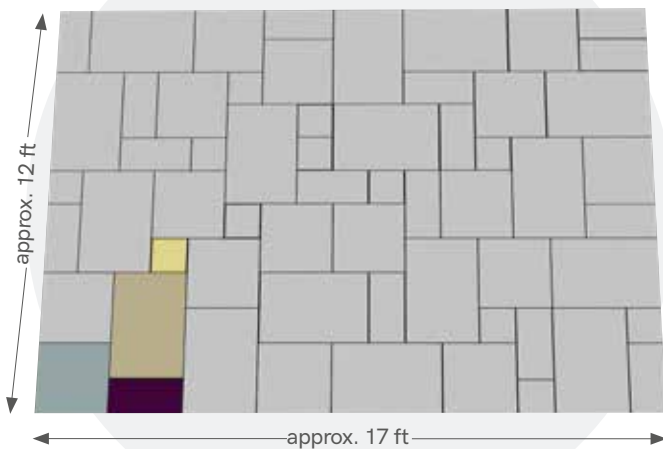


...contains four different  
sizes of natural stone...





...that covers 205  
square ft



## BENEFITS OF CLASSICSTONE™



Natural Paving USA's calibrated hardscape products present homeowners the ultimate in durability and beauty:

- Gauged to 1" thick (nominal)
- 15,000 PSI Compressive Strength (Av)
- Great for concrete overlay
- Easy and fast laying

Such credentials make natural stone the natural choice over concrete and irregular stone paving alternatives.

# PREMIASTONE™









# PREMIASTONE™

Platinum™





Ivory™

Premiastone™ flagstones are available in highly contemporary linear project packs in a choice of Ivory™ and Platinum™ sandstone. You can be sure that a Premiastone™ product will create a natural 'wow factor' in your outdoor living space.

Please note that all product sizes, weights and coverages stated throughout this brochure are nominal.

Please see page 72 for project pack laying patterns.

The Premiastone™ collection includes:



Platinum™\*



Ivory™



\*Please note that although Platinum™ is predominantly a mix of gray shades, it can also display buff and brown tones.



## PLATINUM™



### Calibrated Project Pack 3 Paver Sizes

Each paver is:  $\frac{3}{4}$ " thick (nominal)

**Each pack:**

Covers: 210ft<sup>2</sup>

Weighs: 2425lbs

Contains: 93 no. pieces



12" x 12" - 34 flagstones



24" x 12" - 35 flagstones



24" x 24" - 24 flagstones







IVORY™



### Calibrated Project Pack 2 Paver Sizes

Each paver is:  $\frac{3}{4}$ " thick (nominal)

**Each pack:**

Covers: 220ft<sup>2</sup>

Weights: 2315lbs

Contains: 100 no. pieces



15  $\frac{3}{4}$ " x 15  $\frac{3}{4}$ " - 50 flagstones



24" x 15  $\frac{3}{4}$ " - 50 flagstones





# POOL COPING AND PIER CAPS



Chiseled finish in Promenade™  
(With Promenade™ Classicstone™ on the pool deck, see page 10)

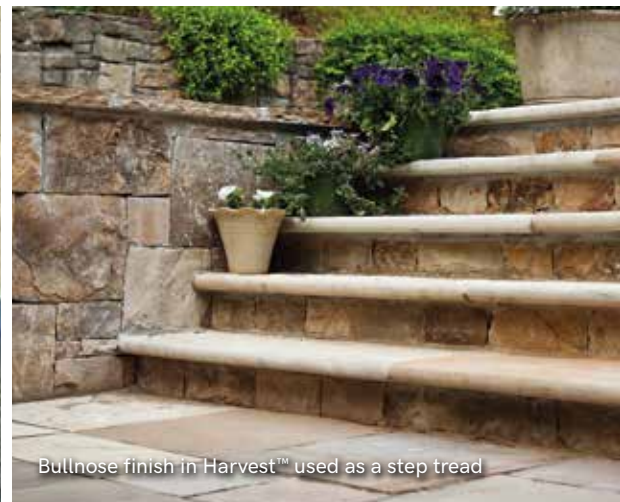




Double Chiseled finish in Promenade™ used as a wall coping



Chiseled finish in Harvest™  
(With Harvest™ Classicstone™ on the pool  
deck, see page 16)



Bullnose finish in Harvest™ used as a step tread

# POOL COPING



Pool Coping, chiseled finish in Promenade™

Our Pool Coping come in a choice of 7 colors and 4 styles. Offering homeowners versatility, the coping can also be used as wall coping on retaining walls and as step treads. This choice in style, color and application allows for both modern and traditional designs. All of the Pool Coping are sandstone except Steel Blue™, which is a limestone and may naturally lighten over time. Please note that all product sizes, weights and coverages stated throughout this brochure are nominal.

**Pool Coping Project Pack**  
**24" x 12" Paver Sizes**  
 Each paver is: 2" thick (nominal)  
**Each pack:**  
 Weighs: 2425lbs  
 Contains: 48 no. pieces

The Pool Coping collection includes:

Promenade™\*

◆◆◆

Lakeland™

◆◆◆

Golden Fossil™

◆◆◆

Harvest™

◆◆◆

Steel Blue™

◆◆◆

Platinum™

◆◆◆

Ivory™

◆◆◆

## COLOR & SURFACE FINISH

COPING STYLE		PROMENADE Natural	LAKELAND Natural	GOLDEN FOSSIL Textured	HARVEST Natural	STEEL BLUE Natural	PLATINUM Sawn	IVORY Sawn
	Bull nose	✓	✓	✓	✓	✓		
	Natural chiseled	✓	✓	✓	✓	✓		
	Natural double chiseled	✓	✓		✓			
	Eased edge	✓	✓		✓		✓	✓



# PIER CAPS



To enable continuity of design throughout outdoor living spaces, we offer 2 inch thick Pier Caps, that are chiseled on all 4 sides and are available in 3 complementary sandstones:

The Pier Caps collection includes:



Promenade™\*



Lakeland™



Harvest™



## Pier Caps Project Pack 28" x 28" Paver Sizes

Each paver is: 2" thick (nominal)

Each pack:

Weights: 2340lbs

Contains: 16 no. pieces

\*Please note that although Promenade™ is predominantly a mix of gray shades, it can also display buff and brown tones.



Pier Cap in Lakeland™ with Lakeland™ Classicstone™ and pool coping on the wall. See pages 12 and 38 respectively.

# DE TERRA™ STONE PAVERS











# DE TERRA™ STONE PAVERS

De Terra™ ....from the earth. Now you can mix and match our Classicstone™ flagstones with this beautiful range of natural stone pavers. Add warmth and style to your pool decks and driveways to create the ultimate curb appeal.

Sahara™



## Our natural stone pavers are sawn on 4 sides and tumbled creating an attractive rustic look.

The sandstone pavers come in project packs that consist of 3 different sized pavers and are available in a choice of 4 colors and 2 thicknesses. In addition we have a fifth color, Charcoal™ which is a limestone and may naturally lighten over time. Charcoal™ is only available in a single size pack of 10" x 6".

The 1 1/4" thick paver is designed for residential projects and the 2" thick paver is suitable for vehicular traffic.

Please note that all product sizes, weights and coverages stated throughout this brochure are nominal.

Please see page 72 for project pack laying patterns.

### The De Terra™ collection includes:



Promenade™\*



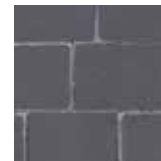
Lakeland™



Harvest™



Sahara™\*\*



Charcoal™



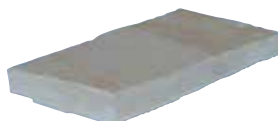
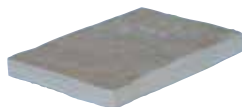
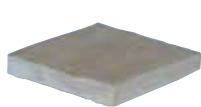
2" thickness (nominal)



2" thickness (nominal)



1 1/4" thickness (nominal)



\*Please note that although Promenade™ is predominantly a mix of gray shades, it can also display buff and brown tones.

\*\*Please note Sahara is only available in 1 1/4" thickness.



# PROMENADE™



## Calibrated Project Pack 3 Paver Sizes

Each paver is: 1 1/4" thick (nominal)

**Each pack:**


**Covers:** 160ft<sup>2</sup>

**Weighs:** 2200lbs

**Contains:** 450 no. pieces

 6" x 6" - 180 flagstones

 9" x 6" - 180 flagstones

 12" x 6" - 90 flagstones

## Calibrated Project Pack 3 Paver Sizes


Each paver is: 2" thick (nominal)


**Each pack:**

**Covers:** 92ft<sup>2</sup>

**Weighs:** 2400lbs

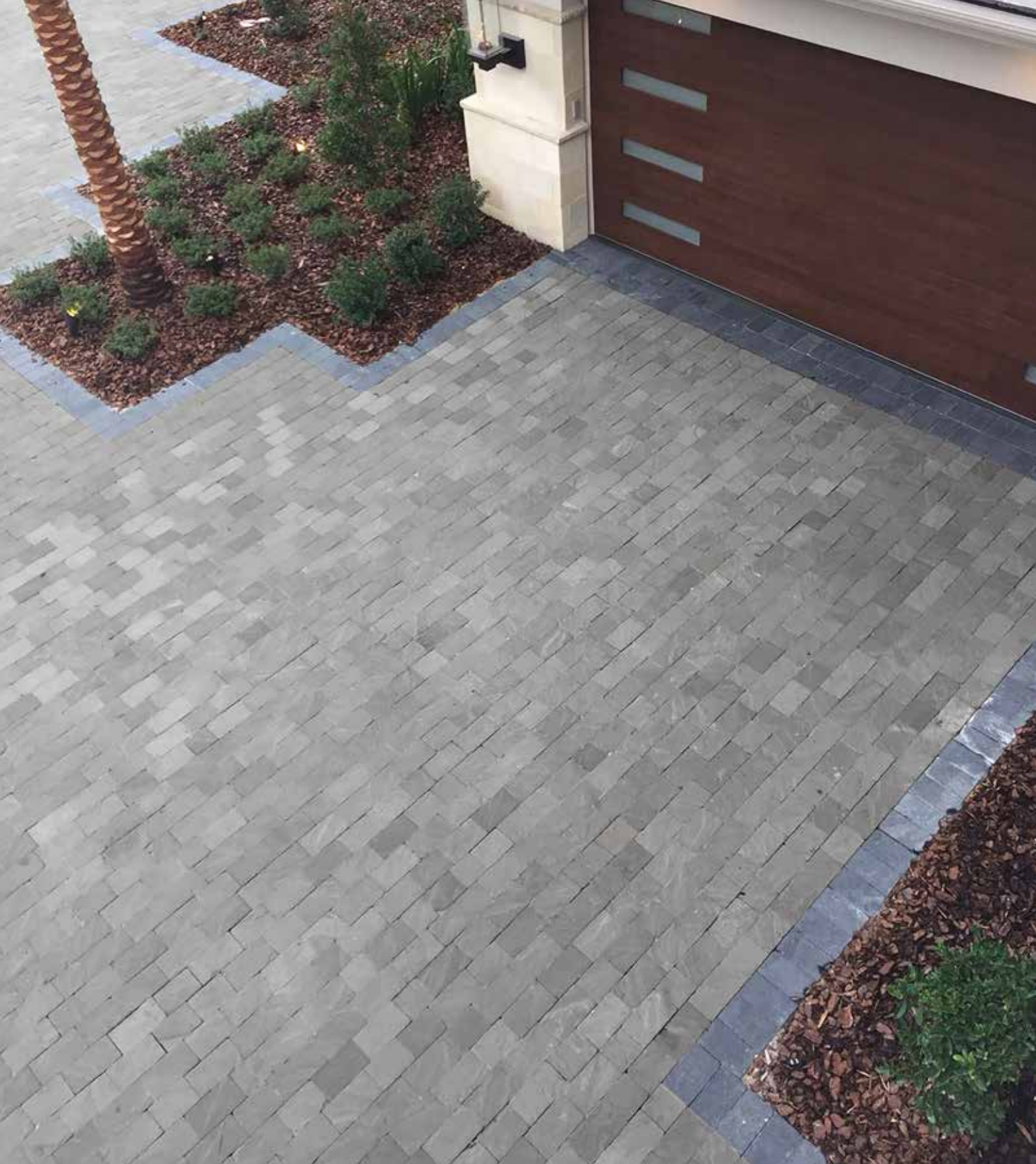
**Contains:** 264 no. pieces

 6" x 6" - 56 flagstones

 8" x 6" - 80 flagstones

 10" x 6" - 128 flagstones









## LAKELAND™



### Calibrated Project Pack 3 Paver Sizes

Each paver is: 1 1/4" thick (nominal)

**Each pack:**

Covers: 160ft<sup>2</sup>

Weighs: 2200lbs

Contains: 450 no. pieces



6" x 6" - 180 flagstones



9" x 6" - 180 flagstones



12" x 6" - 90 flagstones

### Calibrated Project Pack 3 Paver Sizes

Each paver is: 2" thick (nominal)

**Each pack:**

Covers: 92ft<sup>2</sup>

Weighs: 2400lbs

Contains: 264 no. pieces



6" x 6" - 56 flagstones



8" x 6" - 80 flagstones



10" x 6" - 128 flagstones









## HARVEST™



### Calibrated Project Pack 3 Paver Sizes

Each paver is: 1 1/4" thick (nominal)

**Each pack:**

Covers: 160ft<sup>2</sup>

Weighs: 2200lbs

Contains: 450 no. pieces



6" x 6" - 180 flagstones



9" x 6" - 180 flagstones



12" x 6" - 90 flagstones

### Calibrated Project Pack 3 Paver Sizes

Each paver is: 2" thick (nominal)

**Each pack:**

Covers: 92ft<sup>2</sup>

Weighs: 2400lbs

Contains: 264 no. pieces



6" x 6" - 56 flagstones



8" x 6" - 80 flagstones



10" x 6" - 128 flagstones









## SAHARA™



### Calibrated Project Pack 3 Paver Sizes

Each paver is: 1 1/4" thick (nominal)

**Each pack:**

Covers: 160ft<sup>2</sup>

Weighs: 2200lbs

Contains: 450 no. pieces



6" x 6" - 180 flagstones



9" x 6" - 180 flagstones



12" x 6" - 90 flagstones







## CHARCOAL™



### Calibrated Single Size 10" x 6"

Each paver is: 1" thick (nominal)

**Each pack:**

**Covers:** 92ft<sup>2</sup>

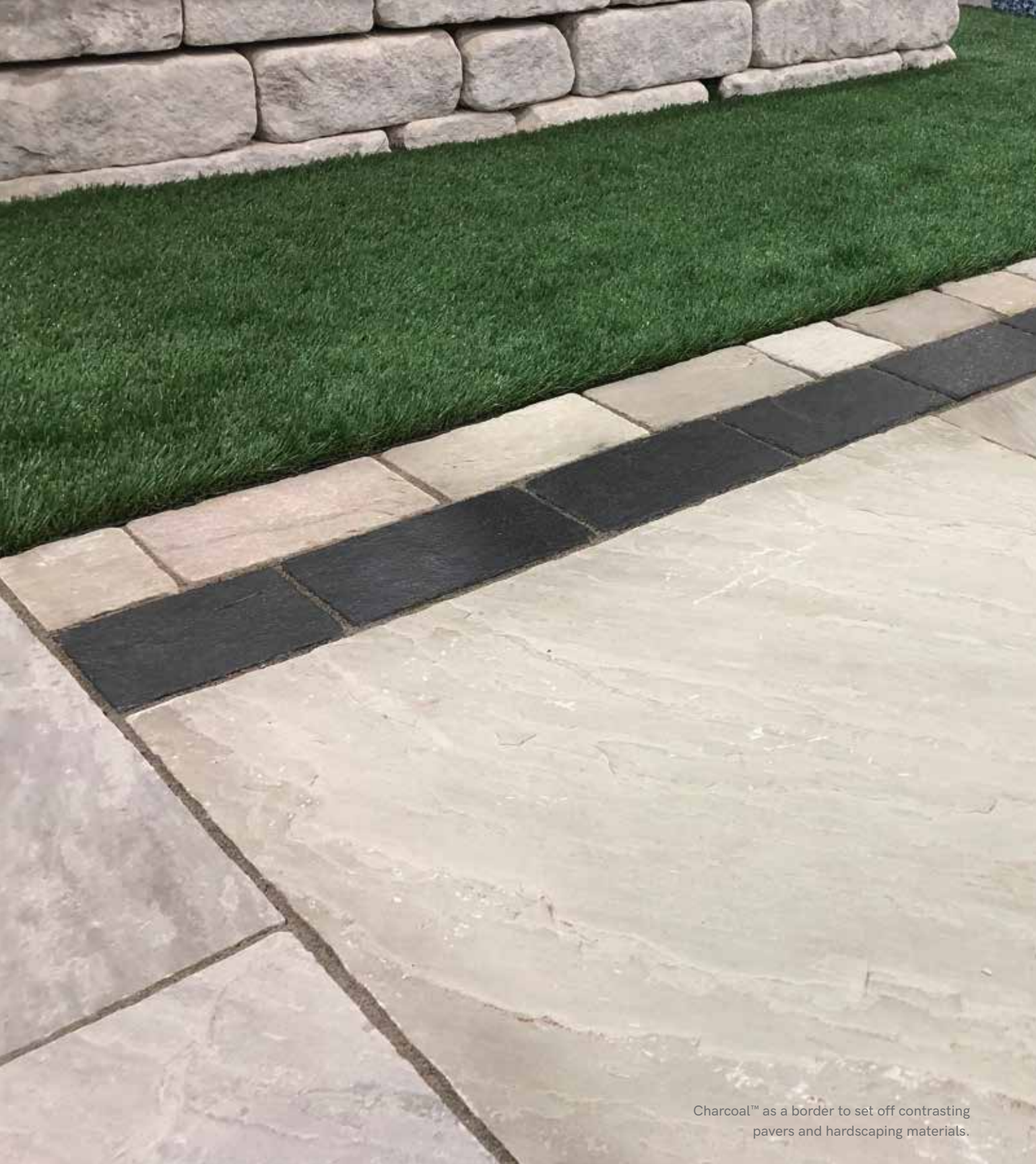
**Weighs:** 2400lbs

**Contains:** 224 no. pieces



10" x 6" - 224 flagstones







# STEP TREADS

Our step treads are heavy duty, high quality sandstone products, which have been designed with a consistent height of 6" so they can be easily stacked to form a natural stairway.

An ideal complement to any patio surface, the step treads are available in 3 colors, which match our Classicstone™ and De Terra™ range, allowing homeowners to create a consistent design throughout their outdoor living space.

Promenade™





Promenade™ with Platinum™ Premiastone™, see page 32

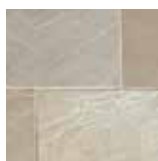
Installation is simple, just prepare the bottom step by leveling and compacting a 40" x 20" area and set the stone in place. Once in place, it is important that the front of the tread is slightly lower than the back to ensure proper drainage. After your first stone is set simply level and compact the area behind the first stone and set the next step on the leveled area, allowing the stone to partially rest on the back side of the previous tread.

Please note that all product sizes, weights and coverages throughout this brochure are nominal.

### The Step Treads collection includes:



Promenade™  
◆◆◆



Lakeland™  
◆◆◆



Harvest™  
◆◆◆



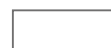
### Calibrated Single Size 39" x 18"

Each paver is: 6" thick (nominal)

**Each pack:**

**Weights:** 3080lbs

**Contains:** 8 no. pieces



39" x 18" - 8 flagstones

Promenade™



Harvest™



\*Please note that although Promenade™ is predominantly a mix of gray shades, it can also display buff and brown tones.



# JUMBO PAVERS AND COUNTER TOPS

These large format pieces of natural stone can be used as Jumbo Pavers for pool decks and patios as well as matching Counter Tops. Our Jumbo Pavers and Counter Tops are hand-cut, calibrated and are available in a choice of two beautiful colors.



## The Jumbo Pavers & Counter Tops collection includes:



Promenade™\*



Harvest™



### Calibrated Single Size 6' x 3'

Each paver is: 2" thick (nominal)

#### Each pack:

Weights: 3970lbs

Contains: 8 no. pieces



6' x 3' - 8 flagstones

Please note that all product sizes, weights and coverages throughout this brochure are nominal.

Promenade™\*



Harvest™



Harvest™



Promenade™



Promenade™

\*Please note that although Promenade™ is predominantly a mix of gray shades, it can also display buff and brown tones.



# FIRE PITS

To provide the ultimate finishing touch to any outdoor living environment, we offer beautiful sandstone fire pits.



Promenade™ with Promenade™ Classicstone™, see page 10.





Lakeland™ with Lakeland™ wall coping and Classicstone™, see pages 38 and 12 respectively.

## Natural Stone Fire Pits

Our fire pits are pre-made, hand cut and come in simple to assemble kits. Available in a choice of 2 colors, Lakeland™ and Promenade™, the fire pits measure 36 1/2" across the inside diameter and stand 17" tall.

The Natural Stone Fire Pits collection includes:



Promenade™\*



Lakeland™



### Fire Pit Kits

**Each pack:**

**Weights:** 2425lbs

**Contains:** 59 no. pieces

(50 walling block pieces  
and 9 wall coping pieces.)



36 1/2" x 17" - 59 flagstones

\*Please note that although Promenade™ is predominantly a mix of gray shades, it can also display buff and brown tones.



# PAVETUF JOINTING COMPOUND

An easy to apply all weather jointing compound with semi-permeable properties, available in a range of 2 colors.



Grey



Buff

- ✓ Use in wet and dry conditions
- ✓ Use with paving joints as narrow as 1/8" and as shallow as 3/4"
- ✓ Jointed areas can be walked upon after just 18 - 24 hours
- ✓ No waste, can be re-used
- ✓ Easy to apply, durable and eco - friendly

Finish	Colors	Application
Granular, traditional	Choice of 2; grey and buff	Simple and relatively quick, 1 person job. Suitable for DIY and trade professionals

Note: Each tub covers approximately 75 square feet.

## IT'S SO EASY

### How to use the Pavetuf Jointing Compound

Pavetuf Jointing Compound is a quick and simple way to securely joint your new paved area and can be used with our Classicstone™ and Premiaestone™ range.

#### PREPARATION

Pavetuf Jointing Compound is suitable to be used with most paving types, apart from block paving, however some paving can be prone to staining. Before applying, test a small area first to ensure your paving does not discolor.





# 7 EASY STEPS TO GREAT LOOKING PAVING

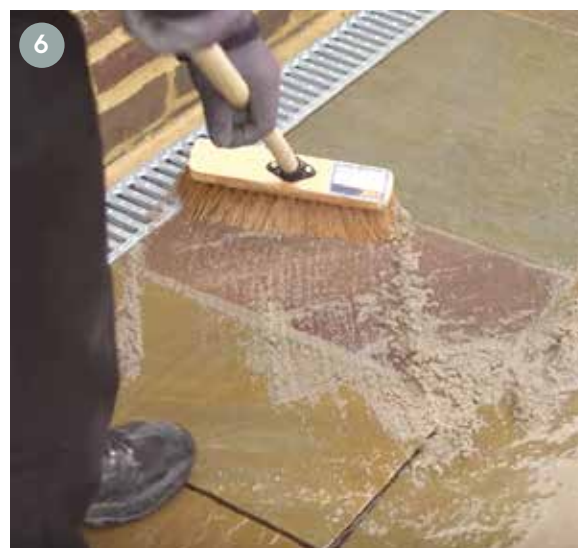
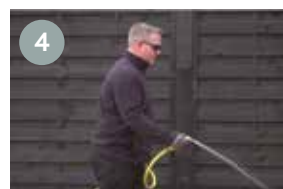
- 1 Thoroughly pre-soak the area before application. The more water used the better the result.
- 2 Pour Pavetuf Jointing Compound evenly across your newly laid paving. Top Tip: To help stop staining, thoroughly soak the compound in the tub before putting on the paving.
- 3 Using a stiff broom, brush the compound into the joints ensuring that they are completely filled.
- 4 Ensure that the surface of the paving and compound are kept wet during the application.
- 5 Repeat step 3 until all joints have been filled.
- 6 Top up any joints that haven't been filled properly and wash off the excess compound from the surface using a watering can or hose with a low water pressure.
- 7 As the application involves water it needs to be applied in temperatures of 40 degrees F and above.

## Top Tips:

- The more water added, the easier it is to move the compound and fill the joints.
- Why not add water into the tub along with the dry compound before pouring the compound onto the paving.
- If you are using compound from a tub that has been opened previously and soaked in water to preserve it, when you come to use this with new tubs of jointing compound, you should mix the open tub with a new tub before application to avoid color batching.

**Important:** Please note that staining can occur on the paving, especially near the joints, if it is not kept soaking wet throughout the application process, and if any surplus jointing compound is not removed from the surface of the paving.

**Important - Do not use acid on Natural Stone**



# PROTECT IT WITH PAVETUF SEALERS

Protect your paving with our high-quality range of sealant products.

Pavetuf Sealants are non-toxic, technically advanced, water-based sealants which are solvent-free, making them an environmentally friendly option.

They have been designed to delay the penetration of water and oily liquids allowing time to clean up any spillage to prevent staining of the hardscaped area.

With the added benefit of being breathable, not only can they be used to seal your paving before installation, they can also be used immediately after.

**All sealants can be used both internally and externally.**  
We recommend using a paintbrush for internal projects.





## OUR SEALANTS INCLUDE:

### STANDARD

#### INVISIBLE

- Easy to apply sealer.
- Invisible sealer for long lasting protection.



### SATIN

- Easy to apply sealer.
- Satin-finish sealer for long lasting protection.



Please note: All the sealants are available in various sizes.

For full product information and for technical guidance please refer to [www.pavetuf.com](http://www.pavetuf.com).





## MAINTAIN THE LOOK WITH PAVETUF CLEANERS

Using the wrong cleaners can damage your investment! To keep your products looking spick and span all year round, you can rely on our comprehensive range of external use, Pavetuf specialist cleaners. The range boasts five different options and have been designed for general everyday use, right through to removing specific stubborn stains.





# OUR CLEANERS INCLUDE:

## GENERAL CLEANER\*

A general acid-free cleaner for regular maintenance on all hardscaping areas.



## DEEP CLEANER\*

An enhanced acid-free cleaner with deep penetrating properties for the easy removal of heavy soiling from all hardscaping areas.



## GREEN OFF CLEANER

A powerful cleaner for the removal of algae, moss, leaf staining and organic growths from all hardscaping areas.



## SALT ERASER

For the removal of efflorescence/salt from the surfaces of paths, drives and patios.



## RUST REMOVER

An effective, non-corrosive rust stain remover for hardscaping products. Also assists in removing surfacing Iron minerals naturally found within the stone which may create a 'rust' type look.



Please note: All the cleaners are available in various sizes.

\*Can be used internally as well as externally.

For full product information and for technical guidance please refer to [www.pavetuf.com](http://www.pavetuf.com).





# ASTM TESTING

There are many types of natural stone available, so it is important to choose the right natural stone product for you. Our stone has been tested by a lab in the U.S. and has far surpassed all ASTM requirements for paver material. The most recent tests completed include: PSI (Compressive Strength ASTM C140-15), Absorption rate (ASTM C140-15) and Coefficient of Friction rate (ASTM C140-15).







### During a series of tests on the 1" Classicstone™ range we see that:

- The average PSI, compression strength is 15,260.
- Absorption rate is 1.2%. This is very low for a paver, which is good, as a low absorption rate is crucial, especially for colder climates.
- The slip resistance, measured by the coefficient of friction, showed our products to have a score of 1.46 in dry conditions and 0.94 in wet.

All of our stone is CE marked to meet with strict EU regulations that were introduced in July 2013. European standards EN1341 (flagstones), EN1342 (pavers) and EN1343 (Kerbs) specify the requirements and test methods for each of these. The CE testing covers areas similar to ASTM including water absorbency, flexural strength and frost resistance. We have had all of our natural stone products tested to show the various properties of each stone and how the stone is likely to behave and react under different circumstances.

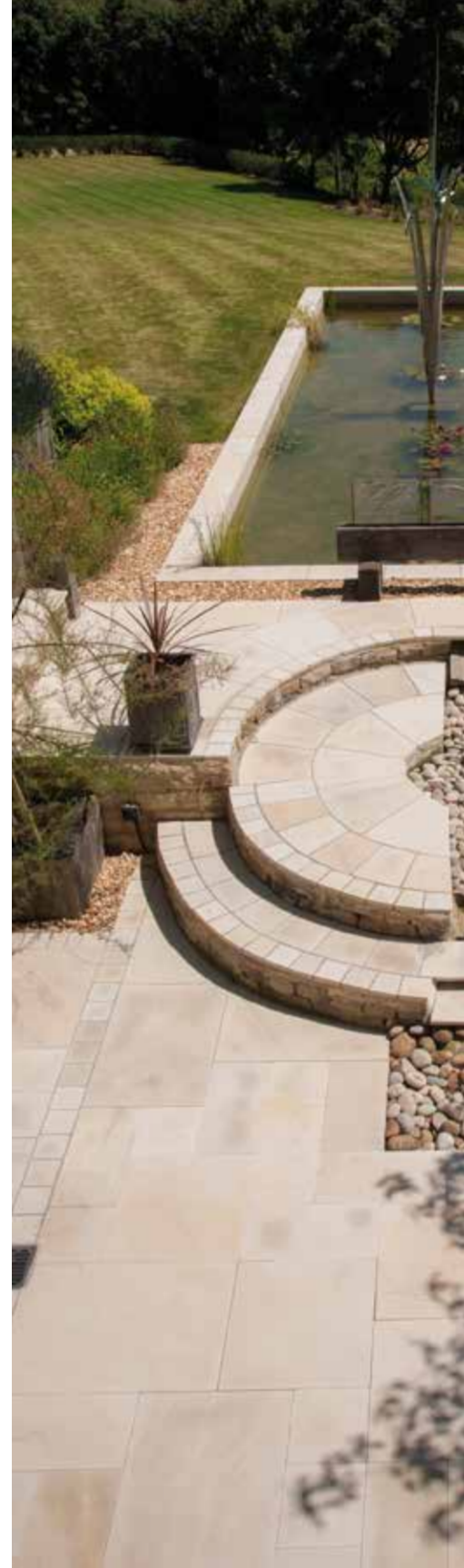
For more detailed information about our product testing and results please contact our Customer Service Team at: **(888) 240-8704.**

# CUSTOM SOLUTIONS

We offer a custom supply service and can produce hardscape products in various thicknesses, sizes and finishes, to suit your exact requirements, utilizing our natural stone range.



To find out more about our custom cut stone and design support please contact our Technical Team at **(888) 240-8704**.





## BUYING OUR PRODUCTS

We have an extensive network of reputable dealers across North America including stone yards, landscape centers, hardscape supply centers and garden centers, where you can purchase our products. Please contact the Customer Service Team for details of your nearest dealer or visit our website:

[www.naturalpavingusa.com/dealers](http://www.naturalpavingusa.com/dealers)

### Exceptional Customer Service

As a wholesaler, we work hard to ensure that our retailers, trade customers and consumers are looked after. The success of Natural Paving USA has been underpinned by providing the highest standards in product quality and excellent customer care.



If you have any questions please contact our Customer Service Team at:

Tel: (888) 240-8704

Fax: (214) 382-2629

Email: [sales@naturalpavingusa.com](mailto:sales@naturalpavingusa.com)

Natural Paving USA Inc. 124 Eason Drive,  
Pooler, GA 31322.

# INSTALLATION

There are many ways to install our natural stone hardscape products. However the chosen installation method must reflect the needs of each specific project and take into account: installer preference, knowledge, experience and specific site conditions.

Please see below for a list of installation methods that can be used to install our various products:

INSTALLATION METHODS	CLASSICSTONE™	PREMIASTONE™	DE TERRA™ 30mm	DE TERRA™ 50mm
Sand-set	✓	✓	✓	✓
Gravel-set	✓	✓	✓	✓
Mortar-set	✓	✓	✓	✓
Overlay	✓	✓	✓	✓

For more details and suggestions please visit [www.naturalpavingusa.com](http://www.naturalpavingusa.com)

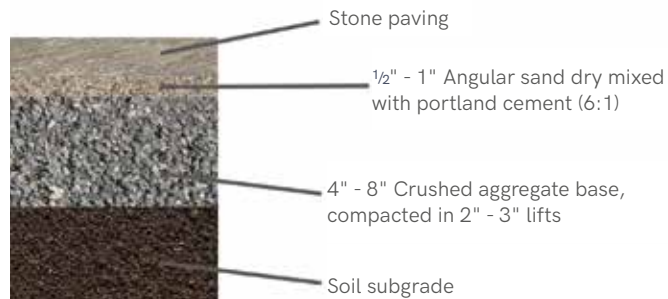
**Important - Do not use acid on Natural Stone**



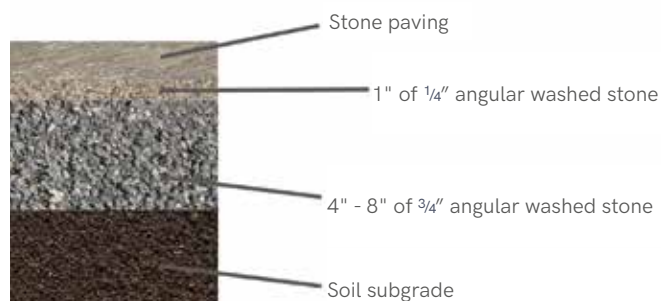




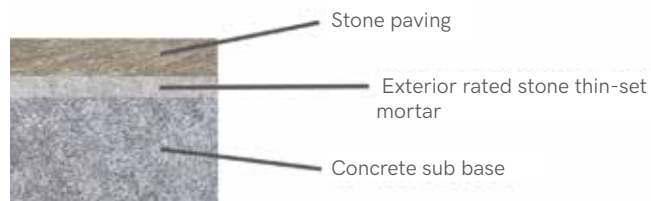
## Sand-set



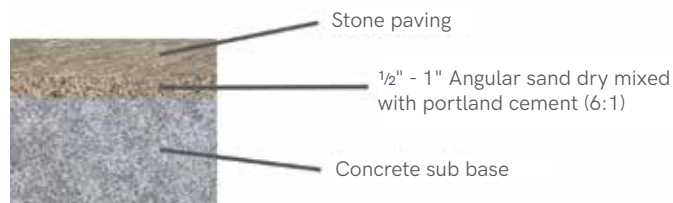
## Gravel-set



## Mortar-set



## Overlay



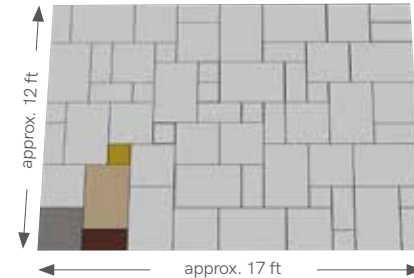
**Important - Do not use acid on Natural Stone**

# LAYING PATTERNS

## Classicstone™ Project Pack

When laid this project pack covers an area of approx. 205 ft<sup>2</sup>

NOMINAL SIZE (inch)	NO. PER PACK	NOMINAL WEIGHT (lbs)
36 x 24	16	2250
24 x 24	16	
24 x 12	16	
11 <sup>3</sup> / <sub>4</sub> x 11 <sup>3</sup> / <sub>4</sub>	12	

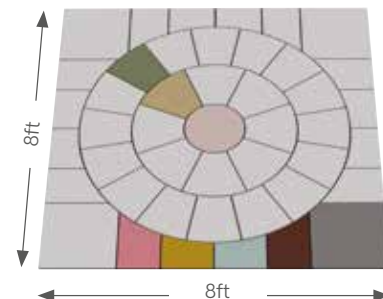


## Circle Kit

2 ring circle with squaring off kit

Each 2 ring circle with squaring off kit:

- Covers 64 ft<sup>2</sup>
- Contains 45 pieces
- Weighs 840 lbs





## Ivory™ Linear Project Pack

When laid this project pack covers an area of approx. 220 ft<sup>2</sup>

NOMINAL SIZE (inch)	NO. PER PACK	NOMINAL WEIGHT (lbs)
24 x 15 <sup>3</sup> / <sub>4</sub>	50	2315
15 <sup>3</sup> / <sub>4</sub> x 15 <sup>3</sup> / <sub>4</sub>	50	



## Platinum™ Linear Project Pack

When laid this project pack covers an area of approx. 210 ft<sup>2</sup>

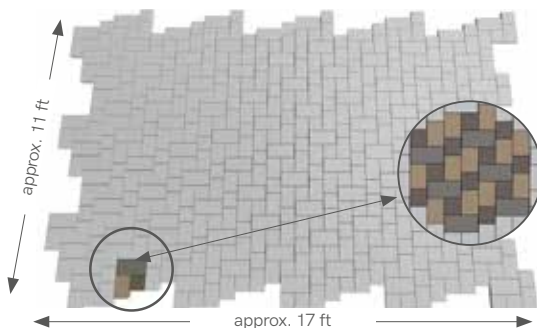
NOMINAL SIZE (inch)	NO. PER PACK	NOMINAL WEIGHT (lbs)
24 x 24	24	2425
24 x 12	35	
12 x 12	34	



## De Terra™ Stone Paver 30mm thick

When laid this project pack covers an area of approx. 160 ft<sup>2</sup>

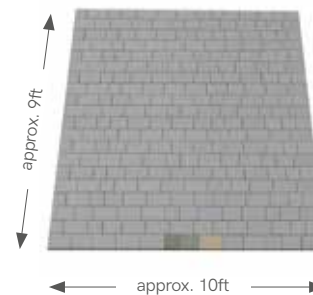
NOMINAL SIZE (inch)	NO. PER PACK	NOMINAL WEIGHT (lbs)
6 x 6	180	2200
9 x 6	180	
12 x 6	90	



## De Terra™ Stone Paver 50mm thick

When laid this project pack covers an area of approx. 92 ft<sup>2</sup>

NOMINAL SIZE (inch)	NO. PER PACK	NOMINAL WEIGHT (lbs)
6 x 6	56	2400
8 x 6	80	
10 x 6	128	



# BENEFITS OF NATURAL STONE OVER COLORED CONCRETE AND NATIVE STONE

Natural Paving USA's calibrated hardscaping products present homeowners with the ultimate in durability and beauty with:

- A vast choice of ethically sourced, luxury paving options.
- Pre-cut and packaged packs of natural stone that are calibrated to ease handling and installation.
- A choice of installation techniques including set in mortar; thin-set or sand set.
- Long lasting and low maintenance solution.
- Our natural stone is competitively priced against concrete and native stone alternatives.

Such credentials make natural stone the natural choice over concrete and irregular stone paving alternatives.



# BENEFITS OF NATURAL STONE OVER NATIVE STONE



Native irregular stone from Oklahoma.



Random irregular shapes that have to be hand collected and cut into shape onsite.



Natural Paving's contemporary shaped Harvest™ sandstone project pack.



Pre cut into squares and rectangles and neatly packaged into crates.





# BENEFITS OF NATURAL STONE OVER COLORED CONCRETE PAVERS

**Natural Paving's stone hardscaping products are more attractive than concrete paving equivalents:**

- Each piece of natural stone has a unique blend of color and tones which makes your patio / driveway / hardscape, completely custom unlike manufactured colored concrete where all pieces are identical and comparatively characterless.
- The color in natural stone is not pigmented like concrete, making it more attractive.
- Natural stone will retain its look over time, as opposed to concrete which is manufactured from composite aggregate mixes that become exposed after a few years of trafficking.

**Natural Paving's stone hardscaping products are more durable than concrete paving equivalents:**

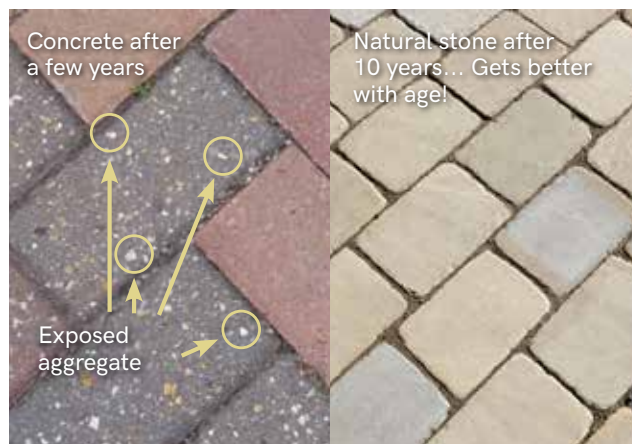
- Natural stone is a durable frost resistant paving.
- Natural stone does not wear, to expose aggregates like concrete does.

**Natural Paving's stone hardscaping products are easier to maintain than concrete paving equivalents:**

- Concrete requires ongoing maintenance and repainting, however natural stone just requires simple cleaning.

**Natural Paving's stone hardscaping products can be installed as easily as concrete paving equivalents:**

- The installation of natural stone does not require new skills; it can be laid similar to concrete.



**Natural Paving's stone hardscaping products are a better investment than concrete paving equivalents:**

- Using natural stone materials will add greater value to your property.
- Natural stone does not necessarily cost more than using equivalent concrete products.

**Natural Paving's stone hardscaping products are more sustainable and environmentally friendly than concrete paving equivalents:**

- Natural stone is the most sustainable building material, as resources of stone on earth are vast, plentiful and date back billions of years. Although the re-generation of stone is not as readily visible as the re-generation of trees, it is a continuous process with natural stone having an enduring life-cycle.
- Natural stone is exactly that, natural, meaning that our stone products have not been 'manufactured' in the way that concrete equivalent products are.
- As a natural product, our stone products are recyclable and can be used as reclaimed paving and/or crushed and used for aggregates.

# STONE:

## OUR END TO END SOLUTION





Our natural stone hardscaping products, destined for beautiful homes and gardens, follow a careful journey that is controlled and overseen by Natural Paving USA. To ensure you receive the very highest standards in quality and service, our unique service offering means that we handle the stone from quarry to local stone yard.

## We Quarry

We source products globally but quarry the majority from partner operations in India, so we can guarantee that all of our products are ethically sourced.

## We Manufacture

Once out of the ground there are multiple factory sites with state of the art machinery where the stone is processed, cut and shaped. This enables us to offer a vast range of products in terms of finishes and sizes.

## We Import and Distribute

We stock our full range in the USA and work with a dedicated transport agent, so we can guarantee the timely and consistent supply of products, as you need them.

## We Supply

We have a reputable and large network of dealers across the USA who we partner with, ensuring that together, we provide you with the right product and respond efficiently and effectively to your requirements.

**For further important details about our natural stone products:** purchasing and receiving them; their properties; installation; product care and health and safety issues, please refer to our 'Understanding and Installing Natural Stone Paving' guide.



Download our  
'Understanding  
and Installing  
Natural Stone  
Paving' guide

## Product Guidance and Installation:

For full details on the properties of natural stone and how to install/use our products, please go to the Helpful Downloads section of the website at

**www.naturalpavingusa.com** or contact  
the Customer Service Team at  
**888) 240-8704.**



Classicstone™ Promenade™



# PRODUCT INFORMATION AND GUIDANCE

## About us

Natural Paving USA is a leading independent supplier of high quality, ethically sourced natural stone products. Our USA division supplies products to businesses and consumers and has a sales team throughout North America. Our experienced sales and technical staff are always available to provide advice and guidance. We are always happy to help and to try and answer any queries that you may have about any of our products. For further information please contact our Customer Service Team at **888-240-8704**.

## Purchasing our Products

If you would like to purchase any product in our range please contact us directly through our Customer Service Team at **888-240-8704**. We can assist you by providing contact details of our network of dealers, designers and/or installers.

All sales will be subject to applicable Terms and Conditions that are available upon request.

Samples of our products are available from our dealers.

## Distribution

Natural Paving's products are available to our dealers for collection or delivery from our Regional Distribution Centers currently located in Houston, TX and Savannah, GA.

All products must be checked on arrival and in the unlikely event of products being delivered in a less than satisfactory condition, please refer to your dealer immediately, allowing time for any defective product to be replaced.

## About our Products

Products and materials, unless otherwise stated, are for domestic hardscaping projects.

The product names do not always relate to the geology of the stone. All of our products vary in color and texture. Each individual piece will have distinct markings and may contain natural imperfections and defects. Size variations will also occur and unfortunately this means we cannot guarantee particular sizes. All product dimensions are nominal and calibrated products are subject to variations. Traditional and processed stone materials may result in some delamination of the surface of our products.

Please note that customers need to allow for wastage when ordering any of our products. As a result of the natural characteristics, production, transportation and cutting methods of the stone, these may result in up to 10% of any order being unusable due to any of the following reasons (including without limitation): chips, blemishes, surface variations, breakages and discoloration. Customers should order an additional 10% in the volume of product required to complete their project.

Over time, environmental conditions may impact our products, that may attract lichen, algae and/or other organic growths and the appearance of our products may be affected. Due to the composition of natural stone and its mineral content, oxidization and color variations may also occur. Some stones may suffer from efflorescence or staining from jointing, bedding and fixing compounds/mortar. For more information visit the download section at [www.naturalpavingusa.com](http://www.naturalpavingusa.com) containing more detailed product information and FAQ's.

## How to Install and Product Care

Careful consideration must be given to the installation and care of our products. You should seek technical advice at all stages from your dealer, designer or installer regarding the care of the particular product you have purchased.

In particular please be aware that you should consider whether the product can be used for the purpose you require. Also please note that some sealers and other materials can damage all of our products. Staining of our products can occur if they are not cared for or are used incorrectly and specialist advice should always be sought if you are in any doubt. For more information visit the download section at [www.naturalpavingusa.com](http://www.naturalpavingusa.com).

## Health and Safety

We would recommend that you take extreme care when dealing with our products. In particular, many of our products are heavy and awkward in shape to lift and we recommend that suitable lifting equipment is used. Appropriate protective clothing should be worn at all times and health and safety legislation should be adhered to when working with our products. When cutting our products either with chisels or rotary disc cutters it is essential that suitable eye protection is worn. Always ensure that suitable respiratory protection is worn to avoid the inhalation of dust particles produced by high speed cutting devices. For more information visit the download section at [www.naturalpavingusa.com](http://www.naturalpavingusa.com)

It is your responsibility to ensure that you comply with all applicable health and safety legislation and guidelines.

## Important - Do not use acid on Natural Stone

All images included in this brochure are the copyright of Natural Paving USA Inc. Unauthorized reproduction of any image is forbidden unless prior permission has been granted by Natural Paving USA. Information is considered accurate at the time of going to print, and Natural Paving USA cannot be held responsible for any errors or omissions. Photographs have been used as a guide to product identification only and may not be accurate in detail or color and there may be some color variations between photographs, compared to the actual product. In the interest of product improvements we reserve the right to change colors, design and specifications without prior notice. Copyright 2021.



Natural Paving USA Inc.  
124 Eason Drive, Pooler,  
GA 31322

**Tel** (888) 240-8704  
**Fax** (214) 382-2629  
**Email** [sales@naturalpavingusa.com](mailto:sales@naturalpavingusa.com)

**[www.naturalpavingusa.com](http://www.naturalpavingusa.com)**

Follow us on social media for inspiration  
and the latest product announcements.



@naturalpavingusa

#naturalpavingusa

Your local dealer